

Quinsigamond Community College

Quinsigamond Community College (QCC) serves the diverse educational needs of central Massachusetts by providing affordable, accessible, and high-quality programming leading to transfer, career, and lifelong learning. Feeling strongly that well-educated and responsible citizens are important assets to the community, Quinsigamond offers opportunities for personal, workforce, and intellectual growth, giving students the right ingredients to prepare for a successful future in chosen careers.

COLLABORATIONS

- KidSeal provides dental cleaning, sealants, fluoride treatment and dental health education services for Worcester Public Schools' children at risk. Last year, more than 600 second graders children from 11 schools were transported by bus to the college where community volunteers and QCC dental hygiene students provided cleanings, dental education, fluoride treatments, and sealants. Additionally, as part of KidSeal, once a week the dental hygiene students administer and supervise the administration of a fluoride varnish program to 11 Worcester Public Schools students in grades one through six.
- Boston University included QCC as part of its Community Scholar Academic Scholarship program in 2007. As a result, five QCC graduates have been awarded scholarships to study at Boston University in bachelor degree completion programs. The partnership includes identified pathways for QCC students to be accepted at BUMET. This public/private collaboration has also resulted in faculty-to-faculty meetings where best practices in online and adult education have been shared and discussed.
- QCC hosted the Nineteenth Annual International Conference on Technology in Collegiate Mathematics in Boston, Massachusetts, from February 15-18, 2007, and was privileged to welcome over 850 presenters and attendees from Portugal, United Kingdom, Turkey, Japan, Colombia, and Canada as well as from all over the United States. QCC is proud of this effort and the national and international recognition it has received from hosting this conference.
- On May 22, 2007, QCC sponsored a conference entitled "Conversations About Teaching Biology." Fifty biology/life science faculty members from Massachusetts community colleges attended presentations on the use of technology in

the classroom, online learning, favorite laboratory activities, and active learning strategies for non-science majors. The conference was a collaboration among biology faculty members from Quinsigamond, Massasoit and Mt. Wachusett Community Colleges. Plans are underway to make the conference an annual event.

Program of DISTINCTION

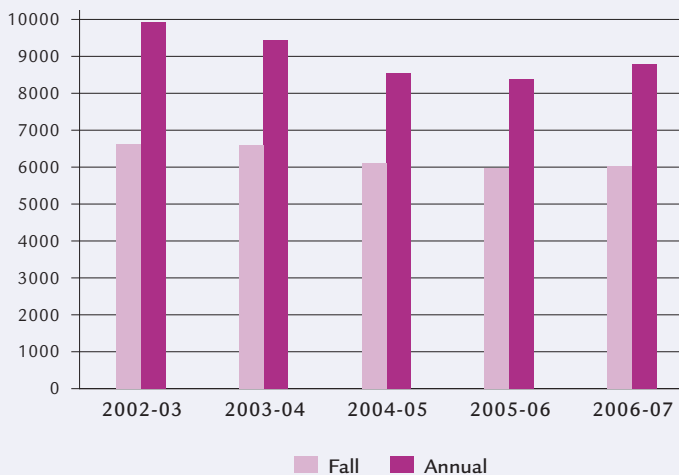
*In collaboration with National Grid (NG), a leading energy delivery and transmission organization, QCC, Middlesex Community College, and North Shore Community College received \$1.8 million from the President's Community-Based Job Training Grants initiative to develop career-focused certificate programs in **Energy Utility Technology (EUT)**. The program will prepare people to fill critical entry-level line worker, meter worker, and substation maintenance worker positions. NG is one of the ten largest utilities in the U.S. and has the largest electricity transmission and distribution networks in New England/New York. Key project goals include developing the colleges' capacity to offer EUT training and providing the energy utility industry with the capacity to fill critical entry-level and junior engineering positions with trained staff. The first nine months of the three-year project focused on designing curricula; outfitting specialized labs, providing professional development to faculty; and initiating a variety of student recruitment activities, including special outreach programs to expose prospective students to career and training opportunities. The award was received in January 2007; by fall 2007 there were 60 students enrolled (20 per college) in the EUT certificate programs.*

- Through Massachusetts Colleges Online, QCC has joined four Massachusetts community colleges to offer an associate degree in Criminal Justice fully online. The four community colleges—Bunker Hill (Boston/Chelsea), Middlesex (Lowell/Bedford), Northern Essex (Haverhill/Lawrence), and Quinsigamond (Worcester)—are now sharing courses in the criminal justice curriculum, a cost-effective approach that will increase access to education opportunities in a high-growth field. The associate degree in criminal justice prepares students for careers in fields such as security, law enforcement, and corrections or for transfer to a bachelor's degree program.

I. ACCESS TO PUBLIC HIGHER EDUCATION IN MASSACHUSETTS

Access Indicators*	
FALL ENROLLMENT	
Fall 2006 Headcount:	6,015
Fall 2006 FTE:	3,698
<i>Results: Over the last three years, fall headcount enrollment and fall FTE enrollment have remained relatively stable.</i>	
ANNUAL ENROLLMENT	
FY2007 Headcount:	8,796
FY2007 FTE:	3,966
<i>Results: Over the last three years, annual headcount enrollment has increased 2.8%, and annual FTE enrollment has remained relatively stable.</i>	
MINORITY ENROLLMENT	
Minority Enrollment Percentage in Fall 2006:	24.3%
<i>Results: Greater than institution's primary draw region's minority representation of 13.9%.</i>	

Fall and Annual Headcount Enrollment



II: AFFORDABILITY OF MASSACHUSETTS COMMUNITY COLLEGES

Affordability Indicators*	
% OF MEDIAN FAMILY INCOME	
Tuition and fees as a percent of median family income in FY2007:	5.0%
<i>Results: Comparable to the Northeast regional average of 4.9%.</i>	

Tuition and Fees as a Percent of Median Income

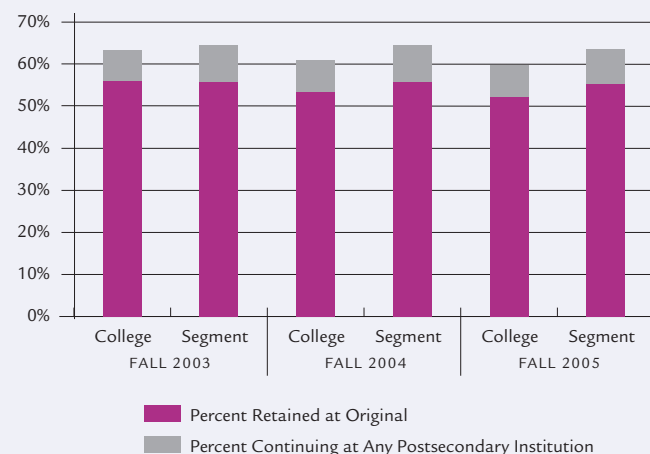
	FY2003	FY2004	FY2005	FY2006	FY2007
Tuition and fees	\$2,730	\$3,600	\$3,600	\$3,600	\$3,750
State median family income (SMFI)	\$66,922	\$67,527	\$68,701	\$71,655	\$74,463
Tuition and fees as % of SMFI	4.1%	5.3%	5.2%	5.0%	5.0%
Segment avg. tuition and fees as % of SMFI	4.2%	4.8%	4.9%	4.9%	4.7%
Northeast avg. tuition and fees as % of SMFI			4.8%	4.8%	4.9%

* See Technical Guide (pages 109–110) for indicator methodology and details.

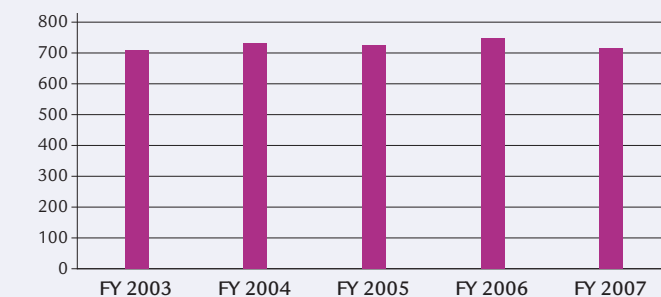
III: STUDENT SUCCESS AND ACADEMIC QUALITY

Success and Quality Indicators*	
FALL COHORT FIRST-YEAR PERSISTENCE	
Retained at original institution:	52.3%
Continuing at any institution:	59.7%
<i>Results: Persistence at original institution has declined 3.8% over the last three years and is below the segmental average of 55.3%.</i>	
FALL-TO-SPRING RETENTION	
2006–2007 Fall-to-Spring Retention Rate:	90.6%
<i>Results: Fall-to-spring retention has remained relatively stable over the last three years.</i>	
COURSE COMPLETION	
FY2007 Credit Course Completion Rate:	74.9%
<i>Results: Comparable to the Board of Higher Education's target rate of 75%.</i>	
DEGREES CONFERRED	
Total Degrees Conferred in FY2007:	714
<i>Results: Average degrees conferred per year over the last three years: 729.</i>	
NURSING EXAM PASS RATE	
2006 Pass Rate for First-Time Test-Takers on the National Nursing Licensure Examination:	91.6%
<i>Results: Above the Board of Higher Education's target pass rate of 85%.</i>	
WORKFORCE DEVELOPMENT	
FY2007 Annual Enrollment in Workforce Development Courses:	6,741
<i>Results: Average annual enrollment in workforce development courses per year over the last three years: 4,183.</i>	

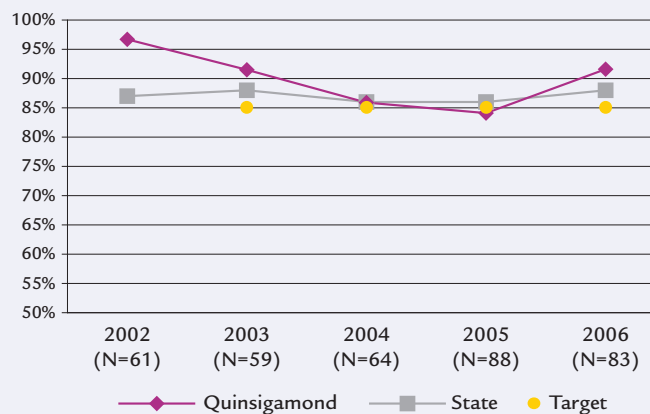
First-Year Persistence Rate (Fall-to-Fall)



Degrees Conferred



Nursing Exam Pass Rate (Associate's Level)

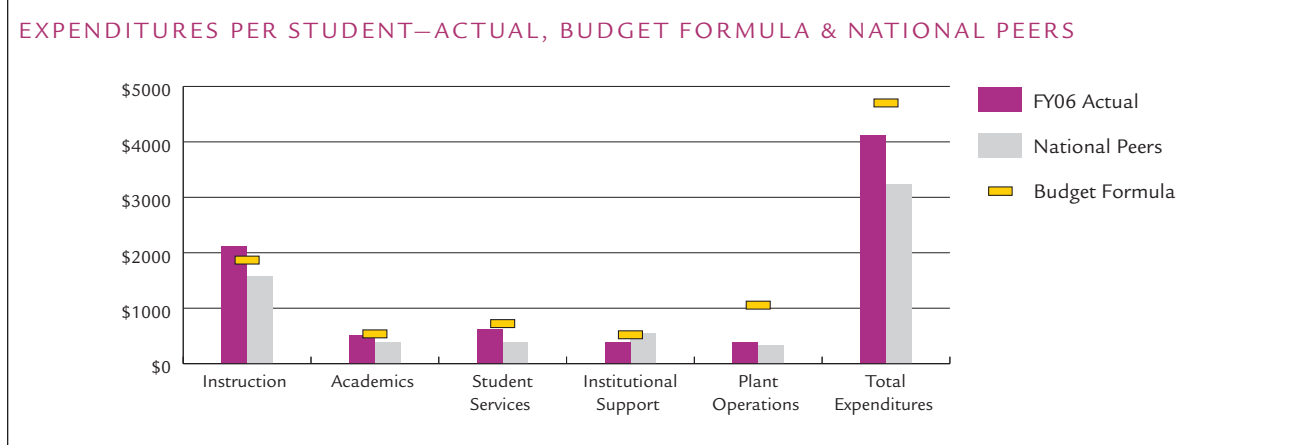


* See Technical Guide (pages 109–110) for indicator methodology and details.

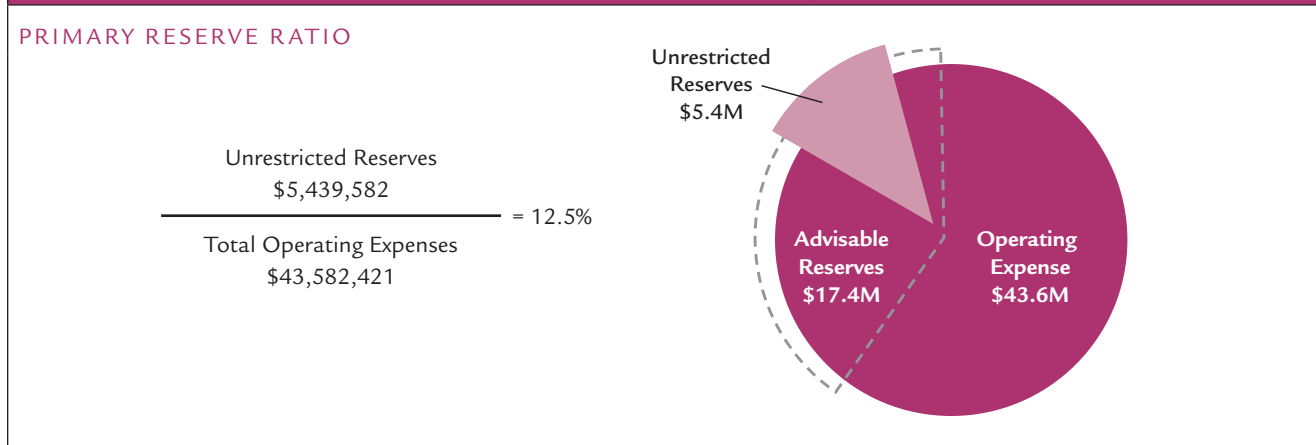
IV: EFFECTIVE AND EFFICIENT USE OF RESOURCES

Efficiency and Innovation *	Compliance *
<p>EFFECTIVE PROJECTS AND INITIATIVES</p> <p>Invested in an energy and water conservation system, resulting in annual cost savings of \$166,000.</p> <p>Implemented recycling initiatives, resulting in the recycling of 11,845 pounds of electronic waste, 59 cases of textbooks, and 60 tons of paper, glass and cans. This resulted in annual savings of \$25,000.</p> <p>Entered into agreement with energy management company to provide surplus energy capacity to meet local area demand in times of need, adding \$14,000 in annual revenue.</p> <p>Secured \$139,000 gift from Microsoft, Inc. and a \$244,000 gift from the Daniels Foundation, both for an advanced robotics program targeting high school students underrepresented in technical fields.</p> <p>Implemented online processes and technology resulting in 50% increase in online payments, 30% increase in online grade submissions, and 100% online insurance waiver compliance.</p> <p>Raised \$1,198,102 through private fundraising, an increase of \$17,213 from FY06.</p>	<p>ANNUAL INDEPENDENT AUDIT</p> <p><i>No material weaknesses based on annual external independent audit:</i></p> <p>2007</p> <p>2006</p> <p>2005</p> <p>2004</p> <p>2003</p>

Resource Allocation *



Financial Health Indicator *



* See Technical Guide (pages 109–110) for indicator methodology and details.